



TOMOS is the light-weight, SaaS solution for application lifecycle quality management.

Why TOMOS?

Lifecycle Management Simplified.

Always on, hosted, web-based, ready in minutes, easy to use, no training/installation/maintenance and built for distributed teams, TOMOS uses a role-based team approach and provides modules that speak to each other. It's the only tool you'll need.

New Tool, Same Page.

It's time to let go of Word, Excel, Outlook, Notes, post-its and other office tools that are not made for application lifecycle management. With TOMOS, everyone is on the same page – Developers, Business Analysts, Testers and Project Managers. TOMOS contains modules for version/build management, requirements management, test authoring, test execution, defect tracking, collaboration, business intelligence analytics, reporting, and social network. And it comes with a built-in methodology for each module and workflows for each role. All in a centralized, web-based system so your team can access TOMOS anytime, anywhere. Can your spreadsheet do that?

One Version, All of the Functionality.

Each subscription includes everything – access to all modules, features, upgrades and support. We don't limit your projects or insist that you pay additional costs for other modules. There are no hidden fees or extra levels of service for the features you want to use. And it only costs \$1.61 per user per day!





Solving Complexity with Simplicity.

TOMOS is Cheap, Easy, Loaded, Secure

Cheap.

Wallets love us. Competitors hate us. TOMOS is so cheap it...



For less than the cost of a cup of coffee, you too can support a development team in need of a unified solution for application lifecycle quality.

Easy on your budget.

It's time to spend smarter. TOMOS is only \$1.61 per user per day (\$49/user/month) and, because it's available on-demand, you don't have to worry about extra IT costs. So scratch those line-item expenses and be the departmental budget superstar with TOMOS.

Reduce Expenses.

Because it is web-based, you can forget about hidden costs like installation, hardware or maintenance. We haven't left anything out either – you and your team have access to all modules and features, as well as support.

Cheaper than Dirt.

TOMOS is cheaper than coffee, bread, a gallon of gas (especially these days!), dirt, toothpaste or bottled water. Personally, we like "cheaper than dirt" the best, though "cheaper than toothpaste" had some pretty vocal supporters.

Easy.

Goodbye complex, Hellooo simple.
It's so easy to use that even a...



You and your team can pick it up in minutes. No training, no installation or setup, no learning curve, no waiting. Get in, get set up and get going.

Web 2.0-ified.

TOMOS is ideal for those at any level of expertise. Our interface is user-friendly, intuitive and clutter-free. "Web 2.0-ified" as our lead architect likes to say. Word, Excel, and Outlook users will feel right at home.

Work Smarter, Not Harder.

We've made it easy to navigate through the system and find what you need to get your job accomplished. No more hunting for items in heavily nested menus or choosing from overwhelming options. You can drag-and-drop or easily make changes with a single mouse click.

TOMOS-ification...

...the process of eliminating complexity.

We've built TOMOS to be straight-forward and easy – after all, what good is a tool if you cannot figure out how to use it?

Loaded.

All of the features. None of the complexity. You'll want to...



We've stuffed TOMOS full of the features you need to get the job done.

Everything...

With modules for requirements, test and defect management, TOMOS covers everything you need to manage application lifecycle quality.

We didn't leave anything out and we don't make you pay extra for the features you want.

...Including the Kitchen Sink.

Here's a few you're sure to like. If you want the whole list (watch out, it's a big one!), go to <http://www.reachsimplicity.com/features.php>.

- Built-in Methodology and Workflows
- User-friendly, Web 2.0 Interface
- Customizable Dashboards
- Automatic Metrics Tracking
- Tons of Pre-built Reports
- Full-traceability Throughout All Documents
- One-click Actions
- Role-based Permissions (Manager, Developer, Analyst, Tester)
- Version and Build Tracking
- Integrates with other Vendor and Open-Source Tools

Secure.

Sit back. Relax. Security is so important to us that we...



Security's the one thing we don't joke about. We undertake a number of measures to ensure security and reliability with your data and our systems.

Peace of Mind.

Your data is protected with a secure connection to our hosted servers, utilizing a 128-bit SSL certificate. Our network, servers and application are monitored for security problems at all times. Furthermore, managed Juniper Firewalls protect our systems, and your data, from hackers, worms and viruses at all times.



TOMOS Modules

Version & Build Management Module



Manage Your Releases.

The application lifecycle process starts here. Drive requirement gathering, development, and testing by easily creating and outlining the details of your new Version. Release multiple builds of new functionality and bug fixes until you're ready to release your new, production-ready version to your customers.

Time	Status	Ran by
07/2009 11:45:32 AM	Failed	jsmith
06/2009 04:15:03 PM	Passed	tpalveri
06/2009 02:16:42 PM	Failed	jsmith
05/2009 03:42:05 PM	Failed	mroberts
	Incomplete	mroberts

Iterate.

The first step in the application lifecycle is to identify the Version of the software. A Version is a large or significant software release that uses either a unique name or number assigned to a unique state of computer software.

Requirements Management Module

Create them. Prioritize them. Associate them. In 60 seconds...



Requirements Made Simple.

Name your requirement, add a few notes if you want, link it up to a transaction and application area, pick a priority and you're done. BAM, that's it. Go back and make some changes if you want, we'll keep track of the history.

Best Practices.

Lots of people can make a simple interface for requirements entry. The hard part is actually creating the requirements. We've got you covered there too. TOMOS' built-in methodology equips you with best practices for defining, gathering, and managing requirements.

It Just Makes Sense.

Instead of starting from scratch, TOMOS provides buckets of probable requirements areas and you fill in the blanks. Instead of re-typing things multiple times, you can copy-and-paste or drag-and-drop to make changes. It's dead simple to use and makes perfect sense at first glance, leaving you with time to, you know, actually get work done.

Metric	Value
Number of Requirements Covered by Test Cases	5
Percentage of Requirements Covered by Test Cases	17%
Number of Transactions Covered by Test Cases	19
Percentage of Transactions Covered by Test Cases	79%
Number of Requirements with Associated Defects	4
Percentage of Requirements with Associated Defects	13%



Solving Complexity with Simplicity.

Test Authoring Module

TOMOS takes the drudgery out of test case creation. Learn how...



Don't you hate repeating yourself?
Don't you hate repeating yourself?

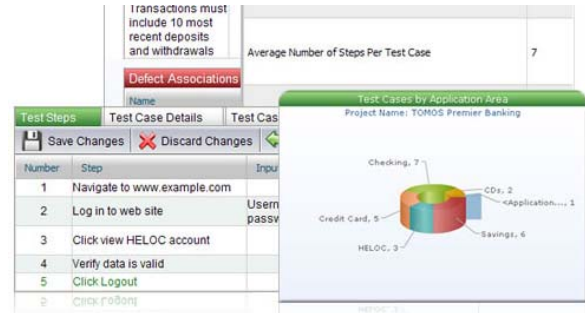
Modularize.

In the test case authoring module, TOMOS takes the drudgery and repetition out of test case creation. Create Master/Linked test step relationships from individual test steps or entire test cases –

update it once and see it reflected automatically throughout TOMOS.

No Learning Curve.

The Excel-like format and tabbing functionality makes the test case authoring learning curve totally flat. Users can generate test cases in a standardized format quickly and easily and then tie those test cases to requirements.



Test Execution Module

Learn how TOMOS does the heavy lifting...



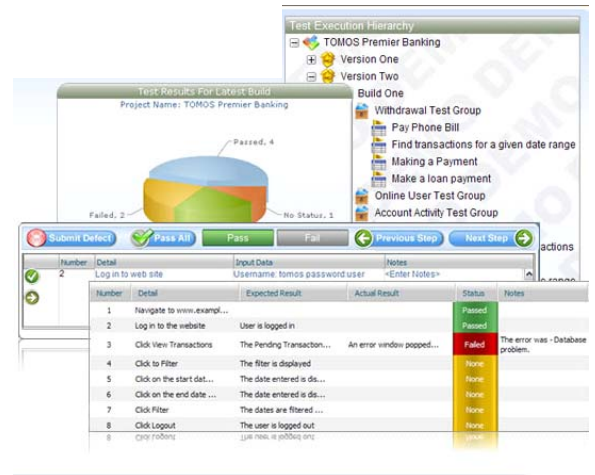
Execution.

Execution is sort of a scary word, no? Normally it is, but not when it comes to test execution within TOMOS.

Click and Go.

Once test groups have been created in the test

authoring module, just click and go. Determine if the step has passed or failed and enter accompanying data. We'll do the heavy lifting and keep track of your test run history, including detailed results of each test step and trends over time. Or, if you're more into instant gratification, view the results in real-time.



Easily Submit Defects.

If you uncover a defect along the way, submit it directly from within the test execution module. It will be automatically created in the defect management module and be tied back to the test case and associated requirement.



Solving Complexity with Simplicity.

Defect Management Module
 Reports, Graphs, Traceability.
 At your fingertips...



Bugs.
 Nobody likes bugs, and some of us have been known to send interns to squash any office pests. TOMOS helps you quickly and easily identify defects and assign Developers to remedy them.

Instant Access.

With instant access to defects, you'll also have detailed information, reports and graphs on new issues, status and updates, trend lines and more at your fingertips.

Full Traceability.

Full traceability means you can create associations among defects, requirements and test cases so your team will never be caught uninformed again. A defect can be traced to a specific requirement or test case, eliminating the guesswork in defect management.

With TOMOS, the bugs are in your kitchen, not in your code.



The screenshots show the TOMOS Defect Management Module interface. On the left is a 'Defects Hierarchy Tree' for 'TOMOS Premier Banking' with categories like '<Application Area 1>', 'CDs', 'Checking', and 'View transactions'. The main area shows a 'Defects Module Workflow' form with fields for 'Tester', 'Enter Defect Name and Description', 'Set status to NEW', 'Set SEVERITY (Critical, Average, Minor)', and 'Assign to developer'. Below the workflow are several reports: 'Key Metrics' showing 'Number of Defects: 20', 'Number of Outstanding Defects: 15', and 'Percentage of Defects Outstanding: 75%'; 'Defects by Application Area' with a bar chart; and 'Defects by Priority' with a 3D pie chart showing 'High: 18', 'Medium: 5', and 'Low: 7'. A 'Details' panel shows fields for 'Submitted by', 'Status', 'Severity', 'Priority', and 'Assigned Developer'.

Collaboration Module



Collaborate.

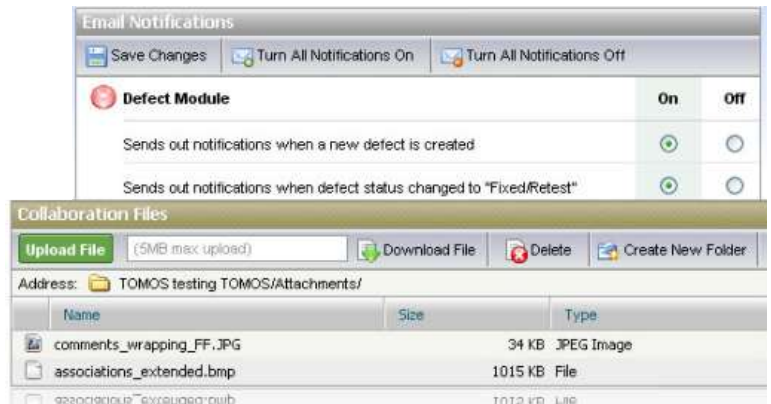
Wouldn't it be great if you had a place to publish all of your documents, screen captures and reports? And how great would it be if you could attach these to requirements, test cases or defects?

And what if it was web-based, everyone could see it and it looked just like Windows Explorer?

There you go! We built it and you have it.

Easily Share information.

TOMOS Collaboration Module was built to mimic Windows Explorer, so you already know how to use it! Create and organize multiple layers of folders to begin developing a shared workspace for your entire team. Storing all of your project content in TOMOS' easy-to-manage, shared online workspace will help boost collaboration and productivity.



The screenshots show the TOMOS Collaboration Module interface. The top part is the 'Email Notifications' settings panel, which includes a 'Save Changes' button and two toggle switches for 'Turn All Notifications On' and 'Turn All Notifications Off'. Under the 'Defect Module' section, there are two notification rules: 'Sends out notifications when a new defect is created' and 'Sends out notifications when defect status changed to "Fixed/Retest"', each with 'On' and 'Off' toggle buttons. The bottom part is the 'Collaboration Files' view, which mimics Windows Explorer. It has an 'Upload File' button (with a 5MB max upload limit), 'Download File', 'Delete', and 'Create New Folder' buttons. The address bar shows 'TOMOS testing TOMOS/Attachments/'. The file list shows three files: 'comments_wrapping_FF.JPG' (34 KB, JPEG Image), 'associations_extended.bmp' (1015 KB, File), and 'img/attachments/extended...' (1012 KB, File).



Solving Complexity with Simplicity.

Business Intelligence Analytics Dashboard



Intelligent Intelligence.

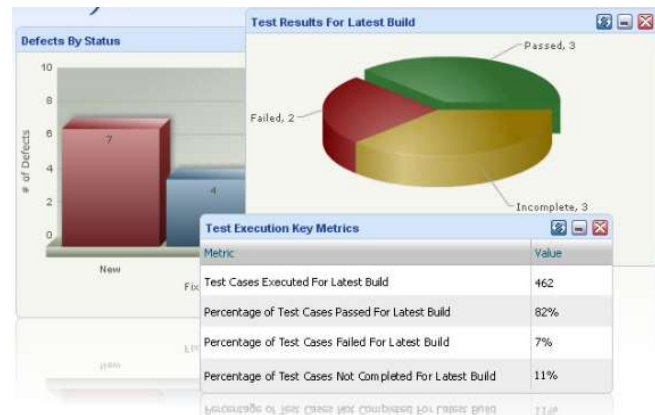
Taking a page from iGoogle with it's cool widgets, we built a role-based business intelligence dashboard that is totally customizable.

Add-and-remove widgets, move them around and filter on the info you want. Bottom line – with a quick glance, you can monitor your project and know exactly what the status is.

TOMOS widgets come in lots of different forms and provide access to activities and information from all across the application lifecycle, without ever having to leave your TOMOS dashboard.

Information Quickly.

TOMOS' dashboard has been predefined based on your role. So - you Project Managers, Developers, Business Analysts and Testers - you can go right to your home page and see all the information we think you need to see. Or you can add and remove widgets as they fit your needs. Bottom line – you will see a great picture of the status of your application in seconds. How great is that?



Deep Dive Reporting Module



We have lots of reports across all modules. Slice 'em and dice 'em any way you see fit. Print 'em, send 'em and keep your team informed.

Customize and Inform.

TOMOS provides reports for all of your needs. Reports by module, role, build, key metrics, priority, time

frame, etc. You need it, we have it.

Cross-Module Reporting

Avoid costly delays and increase the quality of your software by reviewing our cross-module reports. Cross-module reporting identifies which areas of the process are falling behind and allows stakeholders to work in parallel, rather than sequentially.

ID	Name
825	Project Details cannot be seen after creating a new build
822	Graphs Save as Image - need a 'download latest FI
820	Outlook menu area gets hidden in Internet Explorer
	Test Group Name Test Ca Count
821	Manual_Admin 20
	Manual_Admin_Mail 24
	Manual_Defects 26
	Manual_Other 24
832	Manual_Requirements 31
	Manual_TestAuthoring 43
	Manual_TestExecution 38
	Manual_TestExecution 38
	Manual_TestExecution 43





Solving Complexity with Simplicity.

TOMOS Social Network



Blogs, chat, forums, messages, videos, tips and tricks, news. Communicate and collaborate with colleagues, other TOMOS users and the crazy TOMOS staff here.

Communicate, Educate, Inform.

TOMOS' social network provides users of TOMOS and TOMOS' product team with a vehicle for sharing ideas, providing

solutions and feedback and a way to get to know each other. Think of it as Facebook for the application lifecycle crowd.

Sign up and join the discussion!

The goal of our social network is to share knowledge and information for TOMOS software. Join the TOMOS Software Community !



TOMOS Roles

TOMOS features role-based permissions and is ideal for Business Analysts, Developers, Testers and Project Managers.

Business Analysts

Business Analysts analyze business needs to help identify and propose application requirements. You want a requirements management system that BA's will actually use. TOMOS' slick interface is easy to pick up and makes requirements definition, dare we say it, enjoyable.

BA's log in to easily define and track requirements for software development. With TOMOS' role-based permissions, your team doesn't get bogged down in areas that aren't vital to them.



Developers

Developers typically handle design and coding in the software development process. Developers log in to TOMOS, grab the requirements as identified by the business analyst and get started right away, using them as a blueprint for the application. With all your data under one roof, your developers can easily switch gears and tackle defects waiting for them in the Defect Management module.



Testers

Testers detect application failures and unexpected events so that defects may be identified and remediated.

Testers love TOMOS because it's easy to utilize the Requirements module to create test cases in the Test Authoring module and run them in the Test Execution module. When they catch bugs during testing, they can log the defects from within the Test Execution module. Those defects instantly appear in the Defect Management module – no extra work required.



Project Managers

As a Project Manager, information is your most valuable tool. Other application lifecycle management systems make it hard to figure out what is going on within your project. There are too many special acronyms, symbols and workflows to figure out. How are you supposed to remember all that – and how on earth do you explain the application's health to your boss without hours of tutorials and training on the new ALM?

Our goal is to make your job as easy as possible, and solve the complexity of information with simplicity. The customizable, graphical dashboards are integrated with key metrics in plain English. Plus, you can quickly and easily pull reports on the health of your application. If you really want to impress your boss, give our graphs a spin, literally!





Solving Complexity with Simplicity.

Get started with TOMOS

Register for a **FREE 30-day trial**

Experience for yourself the benefits of on-demand application lifecycle quality management without committing to any costs.

Or **subscribe today!**

Subscriptions are \$1.61 per day per user (or \$49 per month). No hidden fees no different versions. It's the all-inclusive kitchen sink version!

Subscription FAQ

How long should I sign up for?

TOMOS plans start at three months and can last as long as you'd like, for as many users as you like.

What types of payment do you accept?

Currently we accept Visa, Mastercard or American Express. We also accept purchase orders and can invoice you.

Can we install it on our server?

No. TOMOS is only offered as a hosted, software-as-a-service (SaaS) solution. This allows us to support only one code base so we can get new features to you quickly.

What if I want a walkthrough or training?

We would be happy to schedule a remote walkthrough for you or your team. TOMOS is very easy to use, so you can be successful without training. Our *Getting Started Guide* is packed full of how-to information so you can dive in right away. If you'd like training, please contact us.

All of our testing data is in a variety of Word and Excel files. Can you help us get the data into TOMOS?

Yes, our professional services team is skilled at transitioning teams from Microsoft-based products into TOMOS. Please contact us for more information.

What if I want to leave TOMOS and go to another system?

TOMOS is upgradable to HP's Quality Center, IBM's new Rational Quality Manager and to Microsoft's Visual Studio Team System. Or, you can leave with your data in Excel or CSV files.

For more info, visit TOMOS today at:

www.tomos360.com



Excel-like format
Easier Reorder Test Steps
Create Master Linked Test Steps

Step	Test Case Details	Test Case Associations	Test Case	Expected Results
1	Navigate to www.example.com		Log in to the website	User is logged in
2	Log in to the website		Click account summary tab	User is brought to the account summary page
3	Click account summary tab		Click on the start date	User is brought to the account summary page
4	Click on the start date		Click on the end date	User is brought to the account summary page
5	Click on the end date		Click Logout	User is logged out of website

Test Execution Hierarchy
Project Name: TOMOS Premier Banking

Version One
Version Two
Build One
Withdrawal Test Group
Pay Phone Bill
Find transactions for a given date range
Making a Payment
Make a loan payment

Number	Detail	Expected Result	Actual Result	Status	Notes
1	Navigate to www.example.com			Passed	
2	Log in to the website	User is logged in		Passed	
3	Click View Transactions	The Pending Transaction...	An error window popped...	Failed	The error was - Database problem.
4	Click to Filter	The filter is displayed		None	
5	Click on the start date	The date entered is displayed		None	
6	Click on the end date	The date entered is displayed		None	
7	Click Filter	The dates are filtered		None	
8	Click Logout	The user is logged out		None	
9	Click Logout	The user is logged out		None	





TOMOS Specifications

Installation

SaaS (software-as-a-service) only.

- Multi-tenant
- Single code base
- Charged per user/per month
- No maintenance fee
- No installation or internal support needed

Browsers Supported

- Internet Explorer versions 6.x and 7.x
- Firefox versions 2.x and 3.x
- Safari seems to work.
- Chrome is not yet supported but on the way.

Resolutions Supported

- 1440 x 900
- 1280 x 1024
- 1280 x 800
- 1024 x 768

We support anything above 1280 x 1024.

Anything below 1024 x 768 will have to scroll.

Build and Test

- *Agile Unified Process*: very lightweight, agile version of RUP concepts
- *TOMOS (of course!)*: Requirements management, test authoring and execution, defect tracking:
- *Selenium (open source)*: automated functional testing
- *JMeter (open source)*: load/performance
- *WebLoad (open source)*: load/performance
- *Subversion (open source)*: source control
- Nessus 3: Application security testing
- *ManageEngine Applications Manager (open source)*: Application performance monitoring

Architecture

- LAMP
 - Red Hat Linux Enterprise 5
 - Apache 2.2.8
 - MySQL 5.0.51a
 - PHP 5.2.5
- YUI (Yahoo user interface library) 2.5.0
- Other goodies embedded for rich internet application (RIA) Web 2.0 experience

Site Support

- 100% network uptime SLA
- Dedicated hosting centers in Georgia, Florida and California
- Backup power systems including on-site diesel powered generators and centralized UPS
- State-of-the art data center security includes
 - monitored closed circuit TV,
 - 24x7 on-site personnel,
 - military grade pass card access,
 - biometric hand-scan units
- Managed Services
- Tivoli managed data backup
- Managed Juniper Systems Firewall

Customer Support

- Email support: 24-hour response time
- Built-in methodology, Workflows, Getting Started doc, help files
- Coming soon: Instant Messenger support, online tutorials



Solving Complexity with Simplicity.

About the Company



TOMOS Software, LLC is a Delaware corporation headquartered in New York City. The TOMOS product was created by a team of senior management and technology experts specializing in software application lifecycle management. While working with a client utilizing a distributed development team, we recognized that small and medium-sized groups often encounter unique challenges when developing their software. We hope to help solve those challenges.



Bill (The Biz), CEO

Bill has over 25 years of management and technology experience and 15 years of software quality expertise. He has overseen or implemented application lifecycle quality management at many Fortune 500 firms in most verticals. His role as President of a highly successful consulting firm earned him the nickname, "The Biz." (a.k.a. *Bill Hayduk*)



Ron ("That will be 50 copies then..."), Director of Sales

Ron has over 25 years of success as a sales executive in software and service companies. Known for his gung-ho attitude in the paintball arena and the boardroom, Ron has the ability to successfully increase sales revenue and cultivate business in new market segments. These abilities have earned him the distinction of being the guy that keeps the lights on and the Diet Pepsi and Red Bull flowing. (a.k.a. *Ron Axelrod*)



Ray (Mr. Intensity), Lead Architect

Ray was a Software Performance Testing engineer prior to joining TOMOS. Whether he's working on the TOMOS code, imagery or website, he's usually at his best after two cans of Red Bull. Wings... Enabling Doability. (a.k.a. *Ray Mandaro*)



Noel (Seven/Ten), Senior Database Administrator

Experience and an average of 72 ounces of Diet Pepsi each day fuels Noel's know-how for back end methodology and database construction. He also wears two shoes, one as the senior database administrator for TOMOS and the other as an expert bowler with the PBA. (a.k.a. *Noel Vega*)

Steve (The Cable Guy), Software Architect

When Steve is not geeking it up developing TOMOS, he enjoys biking, scuba diving, and cooking. Whether it's jumping out of an airplane or "writing scripts for TOMOS", Steve is always up for an adventure. (a.k.a. *Steve Hamilton*)

Eric (Smee), Business Analyst

Eric's our resident Subject Matter Expert (SME) and is always willing to give his input when it comes to usability, whether his comments are being asked for or not. TOMOS developers know that when Eric gets a look at the application, it means more work for them. When he isn't driving the developers crazy, Eric is an avid volleyball player. On rainy days, he sticks to playing Final Fantasy on his PS3. (a.k.a. *Eric Smyth*)

Fred (Fredster), Project Manager

From mainframes to servers to desktops, Fred has been involved in every phase of the System Development Life Cycle, using a wide variety of development methodologies. Fred contributes over 112 years of experience to the TOMOS team and as PM, keeps the rest of us on track. He was understandably upset when TOMOS was selected as the product name instead of "FREDSTER LLC." (a.k.a. *Fred Olsen*)

Dennis (Bugs), QA Manager

Dennis' love of finding bugs (computer-based, not living) is surpassed only by his love of pizza-making. Dennis likes to say he is always rolling in the dough. (a.k.a. *Dennis Riccardi*)

Alex (The Machine), Lead Developer

Alex (The Machine) was the first intern to join the TOMOS team, where he writes code and database stored procedures. Now he is an old hand at TOMOS. His real strength is poker – we have to watch out for him at our weekly office game. (a.k.a. *Alex Oskotsky*)

Joe (The Gambler), System Administrator

Joe is responsible for the TOMOS production environments. He tirelessly monitors performance, backups and available tee times at the local golf course. When he isn't worrying about TOMOS or golf, Joe is probably losing again in the office poker game. (a.k.a. *Joe Brandsdorfer*)

Jeff (The Mad Scientist), Subject Matter Expert

Jeff's holds a Ph.D. in Chemistry and his chief contribution to TOMOS was to build some really cool Windows effects that were not Web 2.0 compliant (and went the way of the Dodo bird). Beyond that, he has offered advice on TOMOS design and architecture to the team. (a.k.a. *Jeff Bocarsly*)

Special thanks to the rest of the TOMOS team:

Ron D, Louis, Rob S, Matt, Jon, Francisco, Yitzi, Jose, Michael C, Rachaud, Jordan, Homer, Chris, Tom, George, Cesar, Mike H., Steve T, Jason, David K, Dave B, and Jen, among others.